

The high-comfort and high-quality boiler for your home!

Nepto



The high-comfort and high-quality boiler for your home!

Nepto

Compact and Modern Design

Nepto wall hung boiler provides ease in assembly and service application with modern design and compact dimensions.



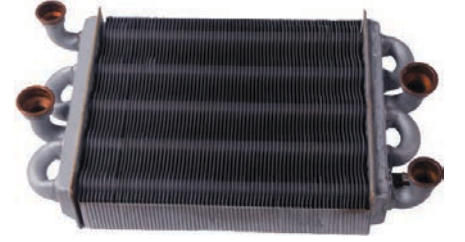
OPF Production Technology

A single operator tracks each wall hung boiler produced along the production line. Close tracking of the products enables raising quality to a maximum level.



Digital Screen and Control Panel

Installation and service water temperature values, water pressure value in installation, and error codes can be monitored thanks to digital screen.



Advanced Heat Exchanger System

Instant water supply is provided by specially designed bithermic heat exchanger system.

MODEL	Nepto HK T 220	Nepto HK T
Technology	non-condensing	non-condensing
Efficiency	92,2 ««	92,2 ««
Heat Output Max. Kw	20	23.5
Heat Output Max. Kw (DHW)	20	23.5
DHW Heat Output l/min $\Delta T 30^{\circ}C$	10	10
Fuel Type	NG/LPG	NG/LPG
Heat Exchanger	Copper	Copper
Moisture Protection	IPX4D	IPX4D
Power Input	220-240V/50Hz	220-240V/50Hz
PCB	Self Diagnostic	Self Diagnostic
Control System	Digital	Digital
Size - Height (mm)	700	700
Size - Width (mm)	410	410
Size - Depth (mm)	280	280
Net Weight (kg)	29.5	29.5
Expansion Tank (lt)	7	7
Color	White	White