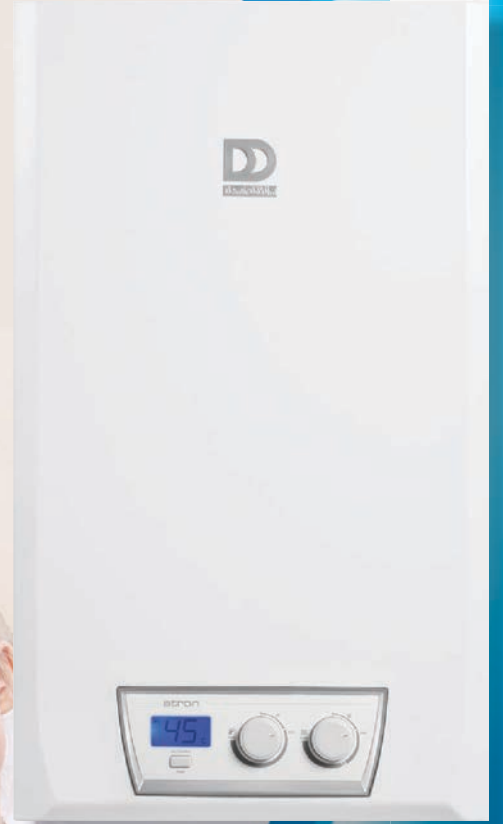


The highly efficient  
and modern boiler  
for your home!

**Atron**



**DD DemirDöküm**

# The highly efficient and modern boiler for your home!

## Atron



### Soft Touch Button

Buttons with Soft Touch technology provide both ergonomic use and elegant look.

### LCD Information Screen

Installation and service water temperature values, water pressure value in installation, and error codes warning in case of error can be monitored thanks to LCD information screen.

### Double Heat Exchanger System

Maximum hot water comfort is provided with double heat exchanger system. Atron Wall Hung Boilers heat water precisely, instantly, and to the desired temperature thanks to this feature.

### Full Insulation

The components of Atron Wall Hung Boiler such as combustion chamber, burner, heat exchanger, expansion tank, and fan have been fully insulated and it operates very silently.

### 5-Way Transitive New Age Heat Exchanger

High level of efficiency is provided with compact 5-way transitive heat exchanger system

### OPF Production Technology

A single operator tracks each wall hung boiler produced along the production line. Close tracking of the products enables raising quality to a maximum level.

### 3-Star Efficiency Class

It is in 3-star efficiency class according to 92/42/EEC standards imposing high efficiency obligation in maximum and minimum operation.

### Digital and Analog Manometer

In Atron wall hung boilers, water pressure in installation can be tracked via LCD screen. Besides, pressure value can be monitored via analog manometer located under the wall hung boiler.

### Fan modulation (Atron)

Fan speed is automatically adjusted according to the temperature requirement of wall hung boiler. This way, while high efficiency is provided in Nitron wall hung boilers, sound levels are considerably low.

MODEL	ATRON H 24	ATRON H 28
Technology	non - condensing	non - condensing
Efficiency	93 «««	93 «««
Heat Output Max. Kw	23.5	27
Heat Output Max. Kw (DHW)	23.5	27
DHW Heat Output I/min ΔT30°C	10.7	12.7
Fuel Type	NG/LPG	NG/LPG
Heat Exchanger	Copper	Copper
Moisture Protection	IPX4D	IPX4D
Power Input	220-240V/50Hz	220-240V/50Hz
PCB	Self Diagnostic	Self Diagnostic
Control System	Digital	Digital
Size - Height (mm)	700	700
Size - Width (mm)	410	444
Size - Depth (mm)	295	295
Net Weight (kg)	30.5	33
Expansion Tank (lt)	7	7
Color	White	White